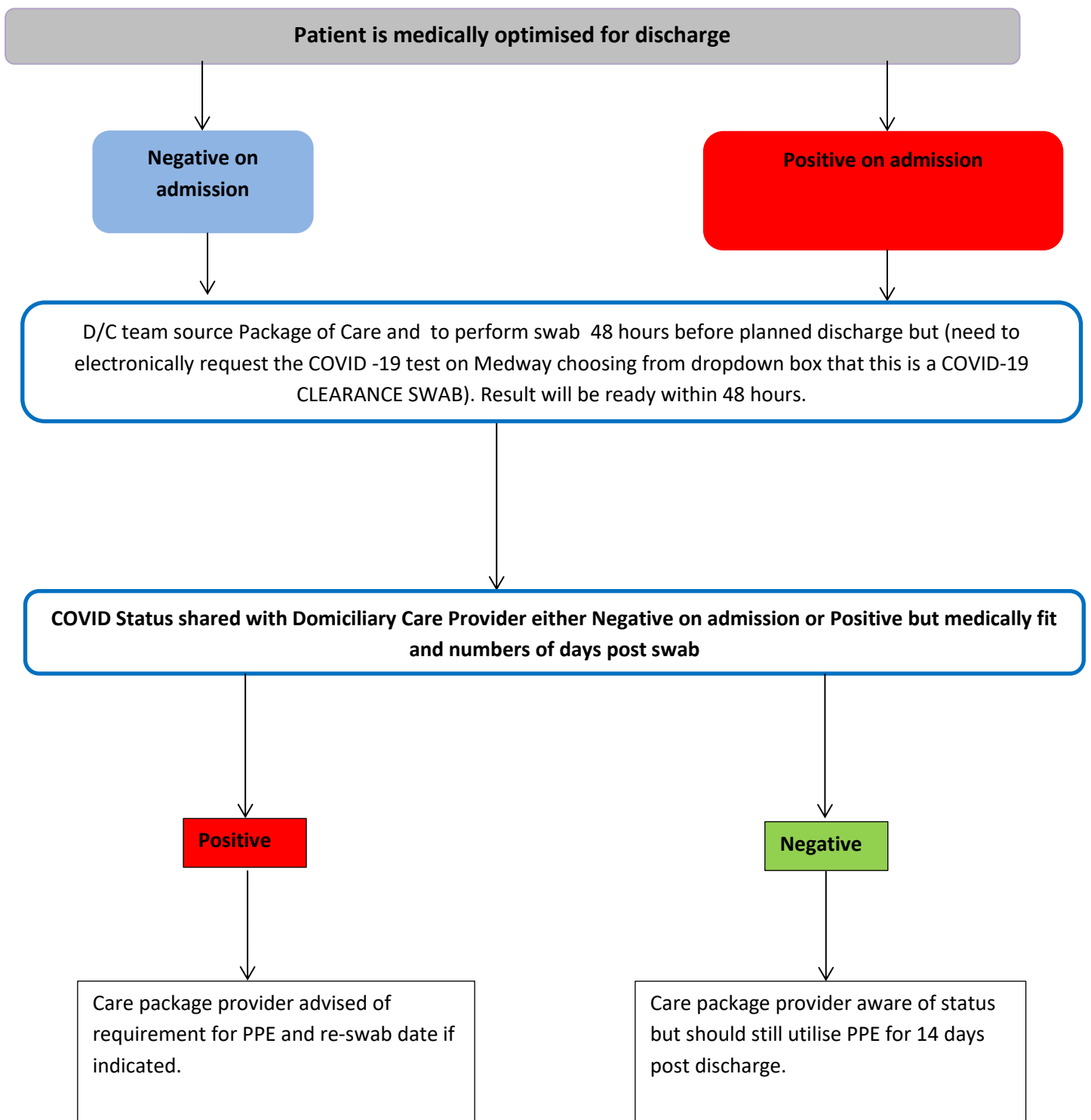


Domiciliary Care PATHWAY – DISCHARGES FROM SHK APRIL 2020



If the patient is either **severely immunocompromised** or have they received ICU care during the current admission a repeat swab they should be retested 14 days from the last positive until a negative result is obtained before infection prevention precautions can be stepped down.

<https://www.gov.uk/government/publications/covid-19-guidance-for-stepdown-of-infection-control-precautions-within-hospitals-and-discharging-covid-19-patients-from-hospital-to-home-settings/guidance-for-stepdown-of-infection-control-precautions-and-discharging-covid-19-patients#immsupp>